



FROM CONCEPT TO CREATION

Add:Unit D, 16F, One Capital Place, 18 Luard Road, Wan Chai, Hong Kong.

Tel:00852-28150191-031

Mob:0086-18665050952

Email:info@sipporgroup.com

www.sipporgroup.com

CONTENTS



01-02 03-17 18-22

23-24
Invisible Curtain Wall

25
Aluminum handrail

26
Aluminum sun room

27-34
Project cases

Our Goal

Committing ourselves to be the best curtain wall & windows & doors system company of the world

Our Management Principle

Regard sincerity as base of business , regard clients as the first

COMPANY PROFILE

Sippor International Co. was founded in 2012, specialized in design, manufacture and installation of various kinds of aluminum curtain walls, windows and doors. Its business scope includes international business that exports products, and domestic business of brand-oriented & Chain operation.

Due to 6 years experience, quality control system, excellent management and global commercial concept, we have launched our products to different oversea markets: North and South America, Oceania, Europe, the Middle East, Africa, and Asian countries and areas.

Our partner factory covers an area of more than 13000 square meters and has over 800 workers and 30 professional engineers. Besides, we have introduced world leading production lines. In this case, our annual production capacity reaches 1,000,000 square meters and annual exported products reaches 300,000 square meters.

We have set up a global network around the world and have established supreme R&D department and two manufacturing bases for aluminum curtain walls, windows and doors. Meanwhile, we have been managing with ERP system and passed ISO9001 in 2015.

Excellent management, advanced equipment and a professional team are the key issues that drive our company to a consecutive growth. As a leading company in the field, Sippor International Co, is keeping developing and innovation on new products, and insisting on customer-orientation, sincerity and honest to create a good future with clients hand in hand.

FROM
CONCEPT TO
CREATION



T100 series casement door

The main profile thickness:2.0MM;
Glass: Available for single and double glass;
Hardware: Big handle, outside with keylock, inside with cyclinder;
With subsill and subhead and jamb



T100 series awning window

The main profile thickness:2.0MM;
Glass: Available for single and double glass;
Hardware:Chinese top brand, with chain winder, inside with keylock;
The inside flyscreen window is available and movable, available with safety screen & fibre flyscreen;
With subsill and subhead and jamb



T100 series sliding door

The main profile thickness:2.0MM;
Glass: Available for single and double glass;
Hardware: Top brand hardware with "D" style handel with keylock inside;
The flyscreen door is available outside.
Available with safety screen & fibre flyscreen;
With subsill and subhead and jamb
It is excellent series for Australian market;





GLW50

50 series glass louver window

The main profile thickness:1.4MM;
Glass: 6mm tempered glass
Hardware: Chinese brand hardware, without lock;
The bottom is with sill for water proof.

GLW50/AW68



AW68

68 series awning window

The main profile thickness:2.0MM;
Glass: Available for single and double glass;
Hardware:Chinese top brand, with chain winder, inside with keylock;
The inside flyscreen window is available and movable, available with safety screen & fibre flyscreen;
With subsill and subhead and jamb

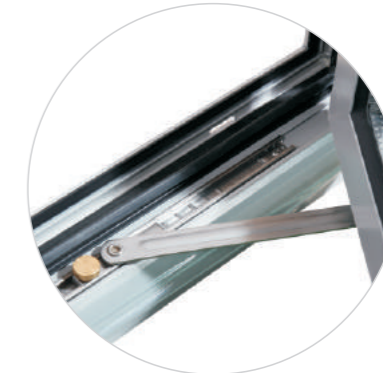


CW65

65 series outswing casement window

The main profile thickness:1.4MM, with thermal break;
Glass: Available for single and double glass;
Hardware: Roto or Chinese top brand
Excellent water proof, air proof.

CW65/CW50



CW50

50 series inswing casement window

The main profile thickness:1.2MM;
Glass: Available for single glass;
Hardware: Chinese top brand, with handle
Inside with architrave;
Middle East market



SWT60
Thermal Break Sliding Window

Description
Thermal break design contributes to the higher performance of heat insulation
Wider track design makes the stronger wind loading performance
Fly screen is available to install for both inside and outside

Material
Profile thickness: 1.4mm
Glass: Available for double glass, the energy saving finish is applicable
Hardware: Chinese and German hardwares are available

SWT60/SW80

SW80
Sliding Window

Description
It is a good value product that meets the medium performance of wind loading and air permeation performance
The inside installation of glass beam makes the installation more convenient than others
Water leaking channel design makes the good performance of water proof

Material
Profile thickness: 1.2mm / 1.4mm
Glass: Available for single and double glass, the energy saving finish is applicable
Hardware: Chinese hardware



SW140
Sliding Windows with Electronic or Manual Shutter

Description
The electronic and manual shutter are available
The shutter is not only a type of shade, but also insulates heat and increases the burglar-resisting
The built-in fly screen is available

Material
Profile thickness: 1.4mm
Glass: Available for double glass, the energy saving finish is applicable.
Hardware: Chinese and German hardwares are available.
Shutter machine: French and Chinese brands are available
Shade plate: 38mm / 43mm



SW140





SW92
Sliding Window

Description
The Middle East design is with the 25mm architrave
Fly screen is included

Material
Profile thickness: 1.4mm
Glass: Available for double glass, the energy saving finish is applicable
Hardware: Chinese and German hardware are available

SW92 / TTW50



TTW50
Tilt-turn Window

Description
The Middle East design with the 25mm architrave
Fly screen is included

Material
Profile thickness: 1.4mm
Glass: Available for double glass, the energy saving finish is applicable
Hardware: Chinese and Germany hardware are available



TTWT56/TTWT73
Tilt-turn Window

Description
Thermal break design contributes to the higher performance of head insulation
34mm insulating strip applied to increase the performance of heat insulation
U value=1.3 W/M² if the special Low-E glass is applied

Material
Profile thickness: 1.4mm
Glass: Available for double glass, the energy saving finish is applicable
Hardware: Chinese and German hardwares are available



TTWT56 / TTWT73/DHW83

DHW83
Double Hung Window

Description
Thermal break design contributes to the higher performance of heat insulation.
Movable Fly screen is included
The loading of each single panel up to be 75kg

Material
Profile thickness: 1.4mm
Glass: Available for double glass, the energy saving finish is applicable
Hardware: Chinese and American hardwares are available





SD121/AW55

BFD90 Bi-Fold Door

Description

Folding design provides the 95% opening
The adjustable hinge design makes the installation easier
Stainless steel track and wheel increase up to 100kg single panel opening and the easier opening management

Material

Profile thickness: 2.0mm
Glass: Available for single and double glass, the energy saving finish is applicable
Hardware: Chinese hardware

WINDOWS & DOORS SYSTEM



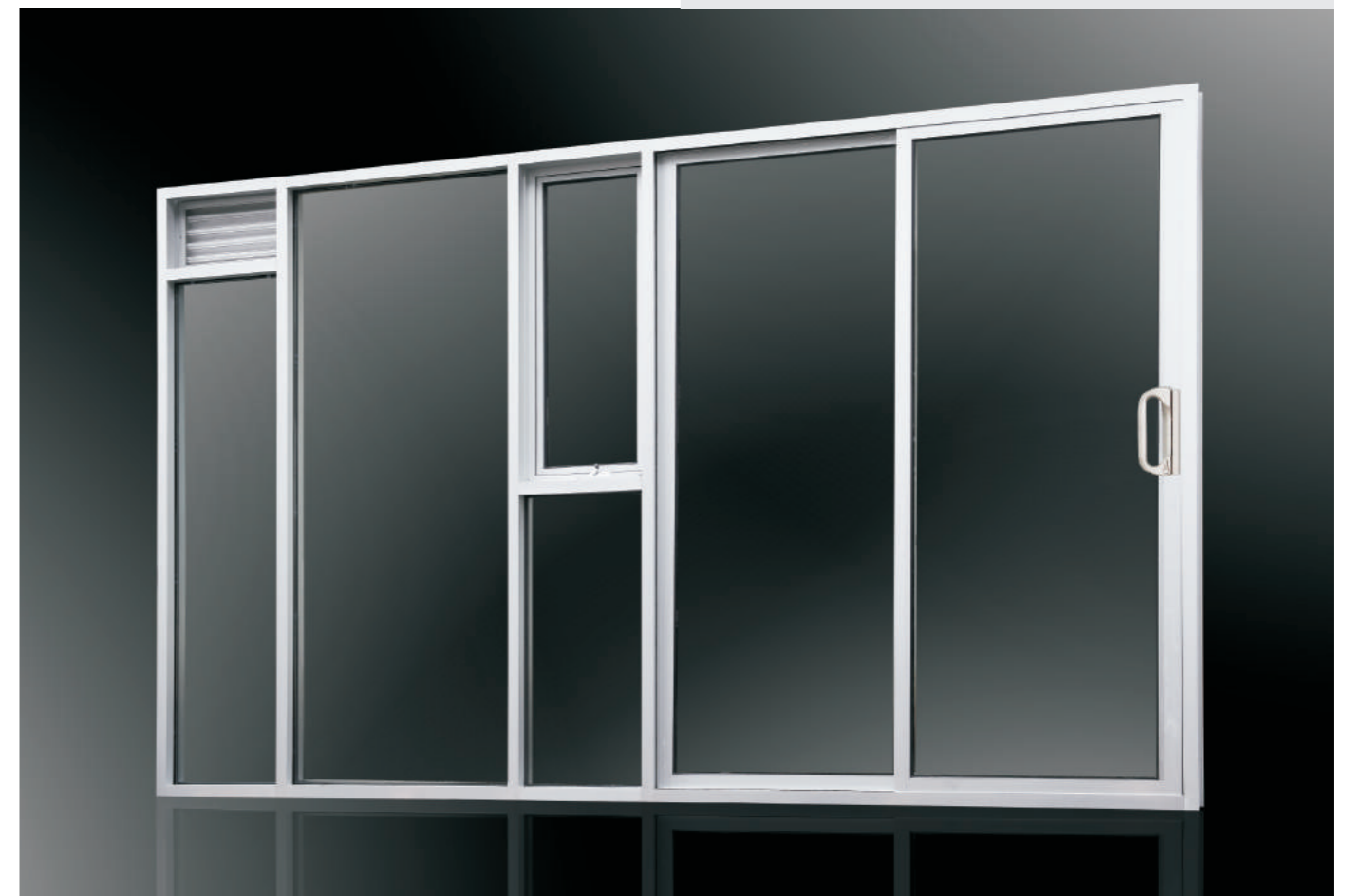
150 Combined Product Louver+Awning+Sliding+Fixed

Description

Drainage system design makes excellent water proof
Hurricane resistance makes the whole product stable
Louver+awning+sliding+fixed combination strong modern commercial vision

Material

Profile Thickness: 2.0mm
Glass: Available for single and double glass, the energy saving finish is applicable
Hardware: Chinese and German hardwares are available



150COMBINED



SD90

SD90
Sliding door

Description

This is the economic system with modern design

Material

Profile thickness: 2.0mm
Glass: Available for single and double glass, the energy saving finish is applicable
Hardware: Chinese hardware



CW50

50 series economic outswing casement window

The main profile thickness:1.4MM;
Glass: 5mm or 6mm tempered glass
Hardware: Chinese brand hardware, with handle available with safety screen



CW50/CDT60

CDT60
Casement Door

Description

Thermal break design contributes to the higher performance of heat insulation
Regarding to the double door opening, the middle lock substitutes the twin-bolt lock that contributes to the easier opening

Material

Profile thickness: 2.0mm
Glass: Available for single and double glass, the energy saving finish is applicable
Hardware: Chinese and German hardware are available



**SD120 (130) (with fly screen)
/ 170 (three tracks design)
Heavy Duty Sliding Door**

Description

Built-in stainless steel track design increases the each panel loading, which contribute to the wider opening
Wider track design provides the strong wind loading performance
SD120 (130) is a design with fly screen
SD170 is the three tracks design

Material

Profile thickness: 2.0mm
Glass: Available for double glass, the energy saving finish is applicable
Hardware: Chinese and American hardwares are available



SD120/130/170



LSD213
Lift-Sliding Door

Description

Lift and sliding mechanism increases the single panel loading up to 250kg that contributes to the bigger opening
Wider glass channel is suited to install the built-in blind with double glass
Thermal break design contributes to the higher performance of heat insulation
Three tracks design

Material

Profile thickness: 2.0mm
Glass: Available for single and double glass, the energy saving finish is applicable.
Hardware: German hardware



LSD213

Wood Clad Aluminum Senes



LSD140

LSD140 Lift-Sliding Door

Description

Lift and sliding mechanism increases the single panel loading up to 250kg that contributes to the bigger opening
Wider glass channel is suited to install the built-in blind and double glass
Thermal break design contributes to the higher performance of heat insulation

Material

Profile thickness: 2.0mm
Glass: Available for single and double glass, the energy saving finish is applicable
Hardware: German hardware



CWW150

Wood Clad Aluminum Crank Operator Casement Window

Description

Description
Wood cladding design can meet the structural requirement and match the interior design with warm feeling at the same time
American hand operating opening design with built-in fly screen
Wider glass channel is suited to install the built-in blind and double glass

Material

Profile Thickness: 1.4mm
Glass: Available for single and double glass, the energy saving finish is applicable
Hardware: Chinese and American hardwares are available
Wood: Burma Teak, Oak, Mahogany are available in different painting



CWW150

TTWT67

Tilt-turn Window

Description

Wood cladding design can meet the structural requirement and match the interior design with warm feeling at the same time
Thermal break design contributes to the higher performance of heat insulation

Material

Profile thickness: 1.4mm
Glass: Available for single and double glass, the energy saving finish is applicable
Hardware: Chinese and German hardware are available
Wood: Burma Teak, Oak, Mahogany are available in different painting



TTWT67/CWW70

CWW70

Wood Clad Aluminum Casement Window

Description

Wood cladding design can meet the structural requirement and match the interior design with warm feeling at the same time

Material

Profile Thickness: 1.4mm
Glass: Available for single and double glass, the energy saving finish is applicable
Hardware: Chinese and German hardware are available.
Wood: Burma Teak, Oak, Mahogany are available in different painting



SD130

Wood Clad Aluminum Sliding Door

Description

Wood cladding design can meet the structural requirement and match the interior design with warm feeling at the same time

Material

Profile thickness: 2.0mm
Glass: Available for single and double glass, the energy saving finish is applicable
Hardware: Chinese and German hardware are available
Wood: Burma Teak, Oak, Mahogany are available in different painting



SD130

BFD110 Bi-Fold Door

Description

Wood cladding design can meet the structural requirement and match the interior design with warm feeling at the same time
Folding design provides the 95% opening

Material

Profile thickness: 2.0mm
Glass: Available for single and double glass, the energy saving finish is applicable
Hardware: Chinese and German hardware are available
Wood: Burma Teak, Oak, Mahogany are available in different painting



LSDW160

Wood Clad Aluminum Lift and Sliding Door

Description

Wood cladding design can meet the structural requirement and match the interior design with warm feeling at the same time
Lift and sliding mechanism increases the single panel loading up to 250kg that contribute to the bigger opening
Wider glass channel is suited to install the built-in blind and double glass

Material

Profile Thickness: 2.0mm
Glass: Available for single and double glass, the energy saving finish is applicable
Hardware: Chinese and German hardware are available
Wood: Burma Teak, Oak, Mahogany are available in different painting



BFD110

LSDW160



CURTAIN WALL

CURTAIN WALL



Invisible Curtain Wall

The main profile thickness: 3.0mm;
Glass: Double glass, with 6+12A+6MM Low-e glass;
Hardware: Imported hardware and Chinese hardware are available;
Whole structure design, great sound insulated, heat insulated, great air-proof and water-proof, excellent wind loading performance;
Great vision and strength;
It suits for luxury villas and stars hotels.

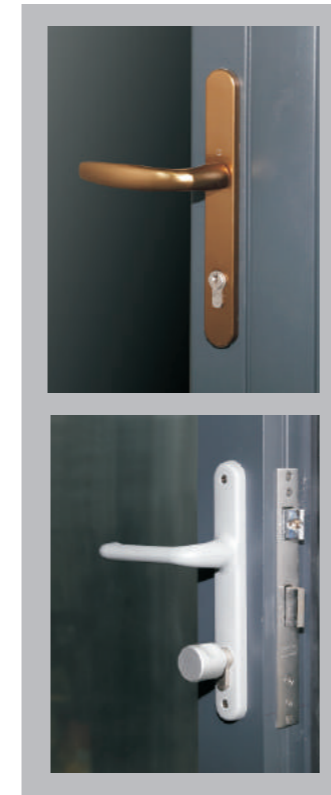
Aluminum Handrail

Description

Any type of combination vision
Post connect with pre-burying steel, safety and steady
Big span glass holding design, whole structure stabilization
excellent wind loading performance

Material

Profile thickness: 2.5mm electrophoresis
Glass: single or laminated glass
Hardware: Chinese and imported handrail hardware are available



Aluminum Sun Room

Description

Drainage system design for excellent water proof
Outside embedded fly screen and near-proof ventilation
system designs for clear interior space
Attractive modern vision, simple but not easy

Material

Profile thickness: 2.0-3.0mm
Glass: 6+6A+6mm tempered insulated glass, other glasses
are available
Hardware: Available for imported brands Roto, Siegenia
GU and Chinese high quality hardware



Basil project ,
New Jersey Project ▶



▲ Huakai Commercial Mansion
Developer: Dongguang Huakai
Haoting Development and
Building Co., Ltd
Finished



▲ Australia Villa Project
Finished Time: Nov 2012



▲ USA Project
Finished Time :
Aug 012

▼ Developer : BP iBiton
Finished Time : 2012
Location : Perth , Australia



▲ Sydney, Australia Project
Finished Time: Nov 2012



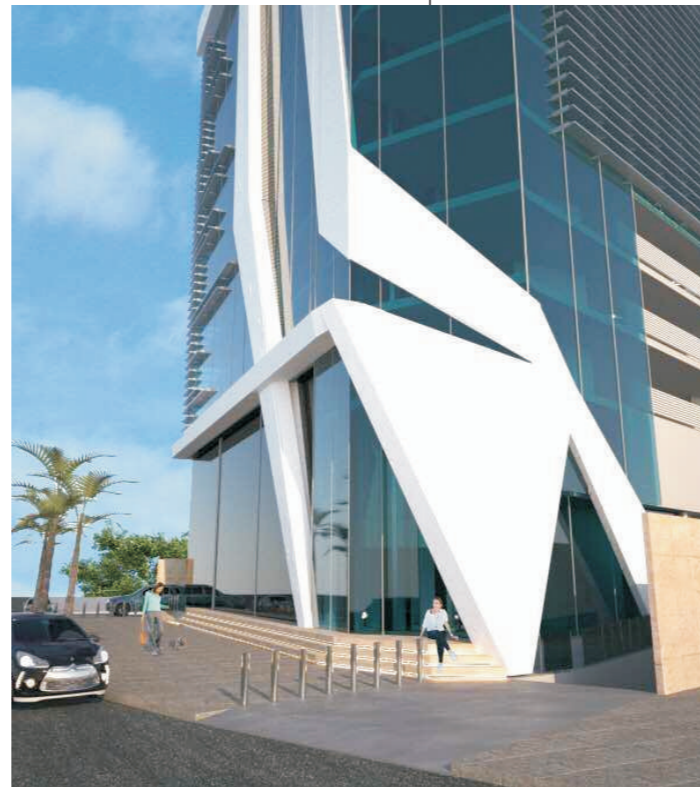
▲ USA Project
Commercial Building
Finished Time: Oct 2013



▲ Philippines Project
Finished Time: Jul 2012

USA Project ▼
Finished Time: Dec 2014





underprocessing projects in Venezuela



FROM CONCEPT TO CREATION

underprocessing projects in
Venezuela